



FOR A SAFER STATE

What happens after a Natural Disaster?

Implementing a Recovery Plan

Presented by:

Sam Stokes

Manager Recovery Programs

(Wooroloo Bushfire and West Kimberley Floods)



What is Recovery

- **Disaster Recovery**

Recovery is part of emergency management, which includes the broader components of **prevention, preparedness, and response**. It includes built, environmental and economic elements, as well as social wellbeing.

- **EM Act 2005**

S3(d) – **Recovery** defined as “the support of emergency affected communities in the reconstruction and restoration of physical infrastructure, the environment and community, psychosocial and economic wellbeing”.

- **Anne Leadbetter**

“Being recovered is being able to live a life you have reason to value”

Recovery Domains



Source: AIDR Community Recovery Handbook 2 (2018)



National Principles

Every event is
different

Every community is
different

Recovery
arrangements cannot
be one size fits all



Understand the **CONTEXT**



Recognise **COMPLEXITY**



Use **COMMUNITY-LED** approaches



COORDINATE all activities



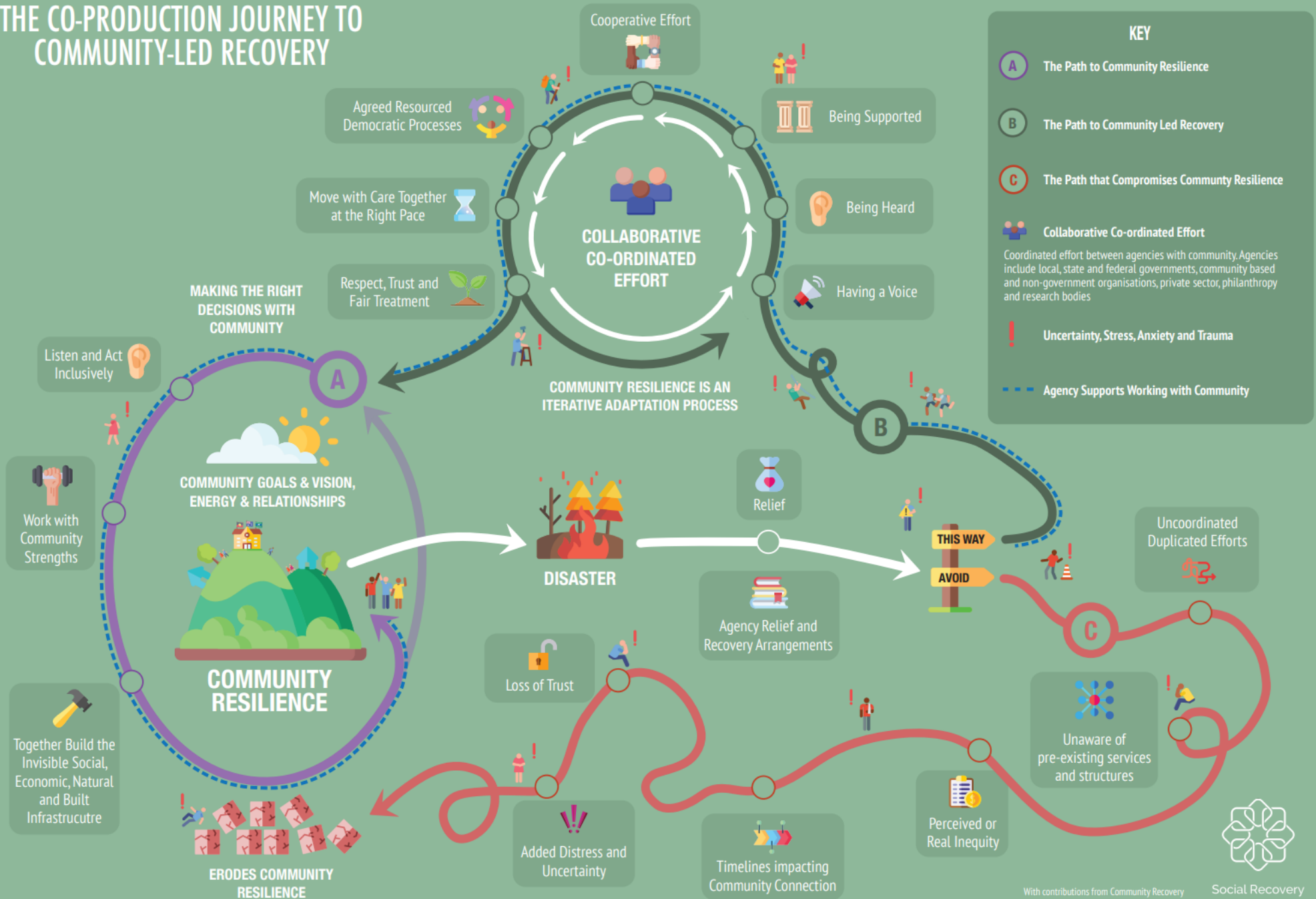
COMMUNICATE effectively



Recognise and build **CAPACITY**

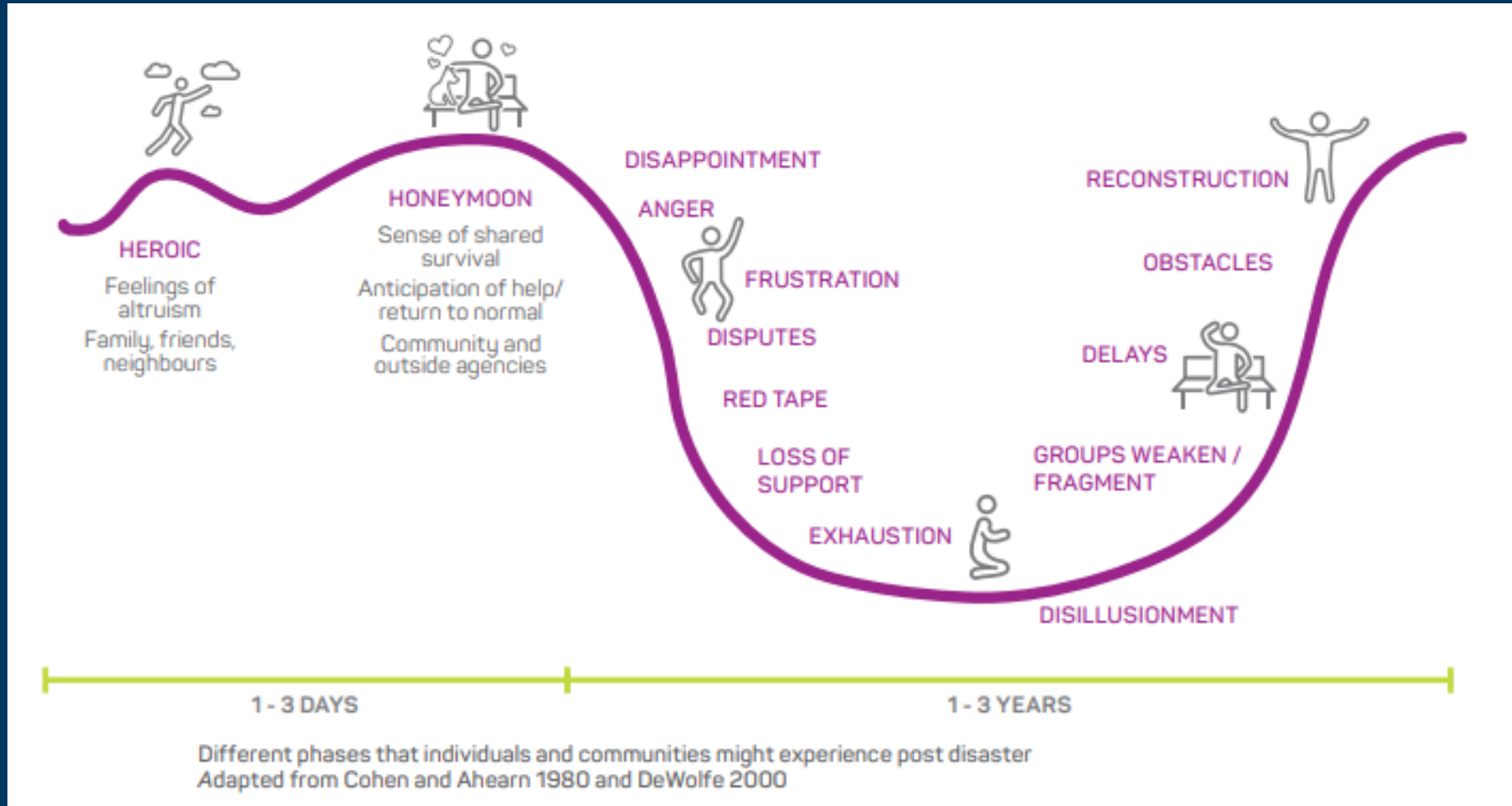


THE CO-PRODUCTION JOURNEY TO COMMUNITY-LED RECOVERY



<https://knowledge.aidr.org.au/resources/social-recovery-reference-group/>

Journey to Recovery





Disaster Recovery Funding Arrangements

Supporting locally led recovery

Standard measures of relief

Category A

- Personal hardship and distress assistance
- E.g. emergency food, clothing and accommodation, essential repairs to housing, personal and financial counselling, residential cleanup

Category B

- Essential services safety and reconnection scheme
- Counter Disaster Operations
- Freight subsidies
- Reconstruction of Essential Public Assets (REPA)
- Immediate reconstruction works
- Emergency works

Exceptional circumstances

Category C

- Community mental health
- Industry/sector recovery packages
- Flexible grants
- Community Recovery Officers
- Special cleanup and recovery grants for small businesses, not for profit or primary producers

Category D

- Building asset resilience (betterment)
- Clean up or restoration of assets (ineligible under Cat B REPA – e.g. environmental/natural assets)



FOR A SAFER STATE

Recovery Roles

Hazard Management Agency

- EM responsibilities for their hazard in relation to prevention, preparedness, response and recovery (PPRR).

Controlling Agency

- Initiate a range of recovery activities during the response.

Local Government

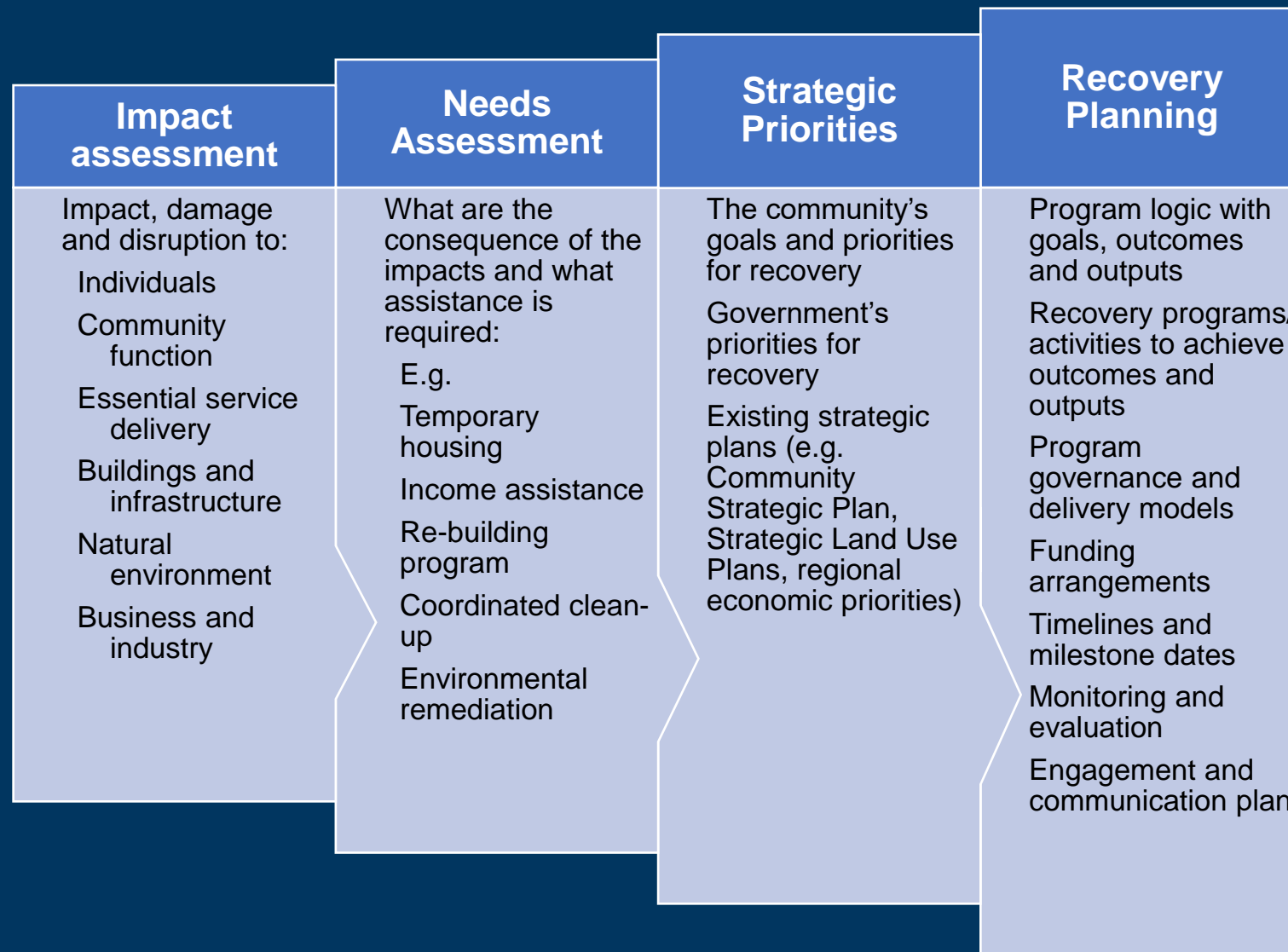
- Manage recovery (s.36(b) EM Act).

State Recovery

- Responsible for State-level disaster recovery.
- Whole-of-government recovery approach.
- When recovery exceeds capacity and capability of local government - coordinate short to medium term recovery



Recovery Planning





FOR A SAFER STATE

Waroona Complex Bushfire 2016

Yarloop · Harvey · Waroona
BUSHFIRES CLEAN-UP

Dr Ken Michael
State Recovery Controller

Progress Update

97

PROPERTIES
SCOPED

67

PROPERTIES
DEMOLISHED

8

DEMOLITIONS
UNDERWAY

15

DEMOLITIONS
STARTING SOON

9

CREWS
RUNNING

Yarloop

PLANNING FOR THE FUTURE

Community consultation



THE FUTURE OF **Yarloop**

Dr Ken Michael


State Recovery Controller





WOOROLOO BUSHFIRE RECOVERY





State Recovery Plan guides the State's involvement in recovery efforts

- Provides for short and long-term recovery

On 25 February 2021, a joint Commonwealth and State DRFA Category C Community Recovery Fund worth \$18.1 million was announced. The Category C Community Recovery Fund consists of:

- **Coordinated Residential Clean-up**
- **Community Recovery and Outreach**
- **Community and Recreational Asset Restoration**
- Supported by an **Monitoring and Evaluation Plan**



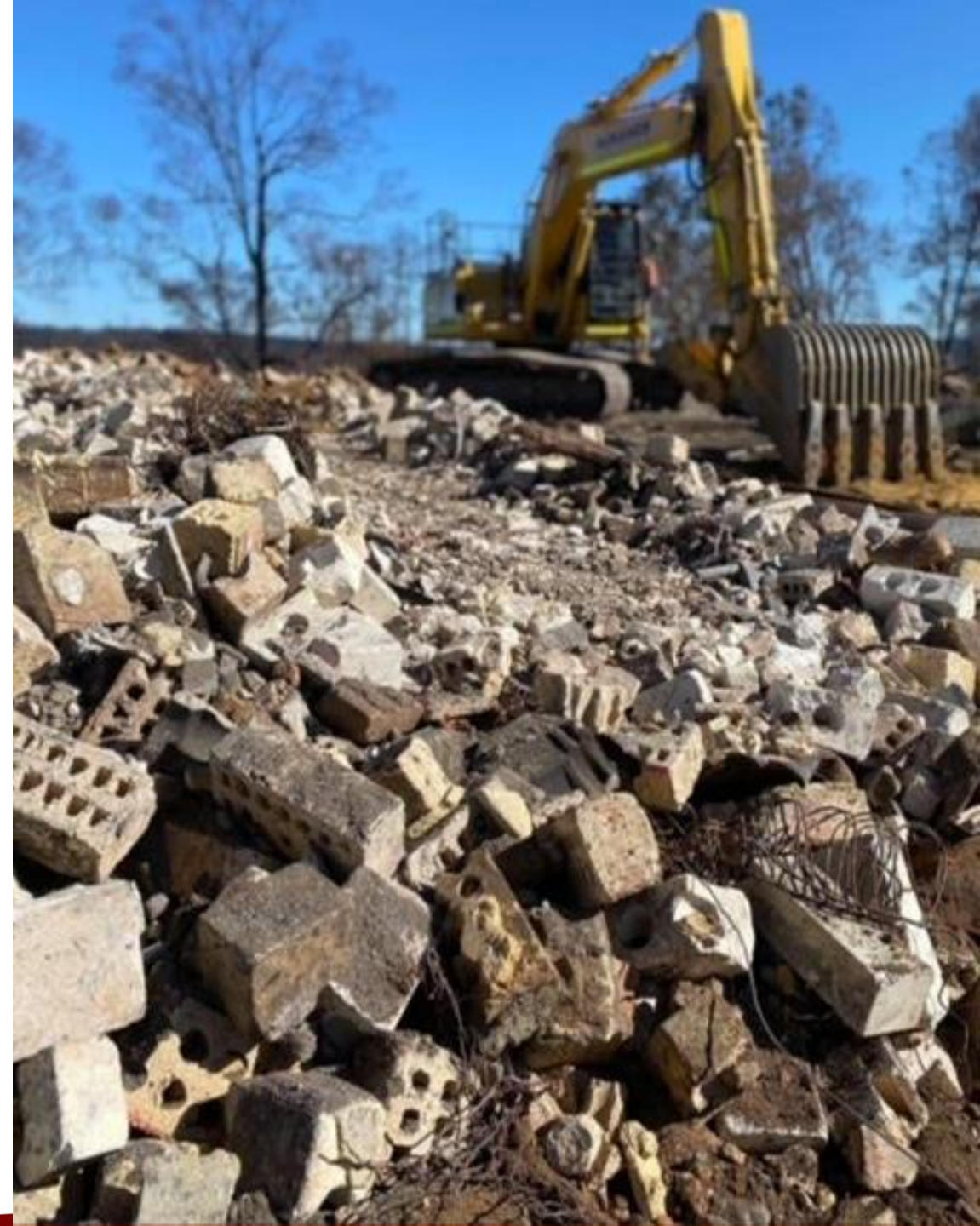
Wooroloo Bushfire State Recovery Plan



Coordinated Residential Clean-up Program

Category C Funding

The Program undertook clean-up activities for **135 eligible residents** impacted by the bushfire, including the removal of in-scope residential bushfire related waste (buildings and vehicles).



Community and Recreational Asset Program

The CR&A Program allows for eligible clean up and restoration works on damaged community and recreational facilities and assets in the City of Swan.

Eligible works include clean-up and repairs to:

- walking trails
- picnic furniture
- bridle trails
- footpaths ablution block & septic systems



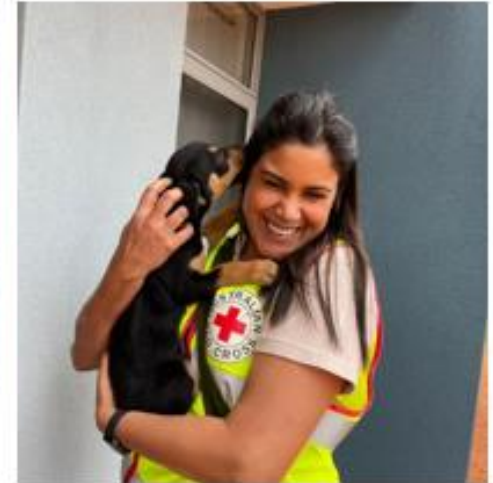
Tilden Park Footbridge



Community Recovery & Outreach Program

Category C Funding

This Program provides funding for Community Recovery Officers to facilitate access to **social**, **emotional** and **psychological services** and deliver community-led initiatives that support the short, medium and longer term needs of the community.





FOR A SAFER STATE

STC Seroja Recovery

- Community Outreach & Welfare Support
- Recovery and Resilience Grants
 - Small business recovery grants
 - Primary producer recovery grants
 - Community, recreational, heritage assets
- Cyclone Seroja Recovery Hub
 - Four Recovery Hubs established in Northampton, Kalbarri, Morawa & Geraldton





KIMBERLEY FLOODS **RECOVERY**

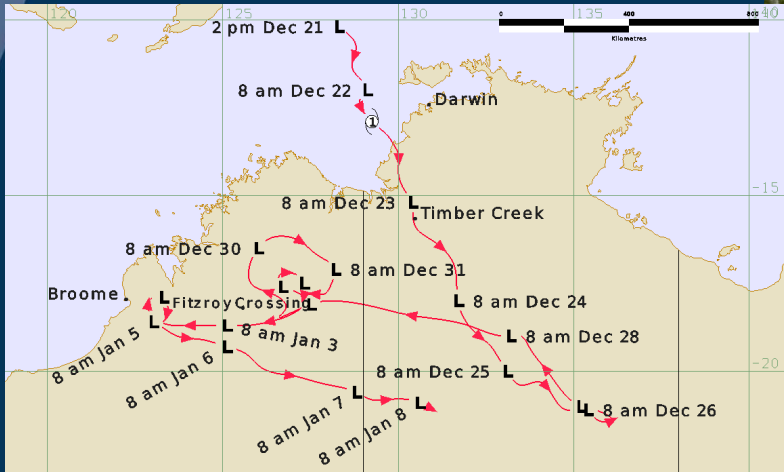


West Kimberley Floods

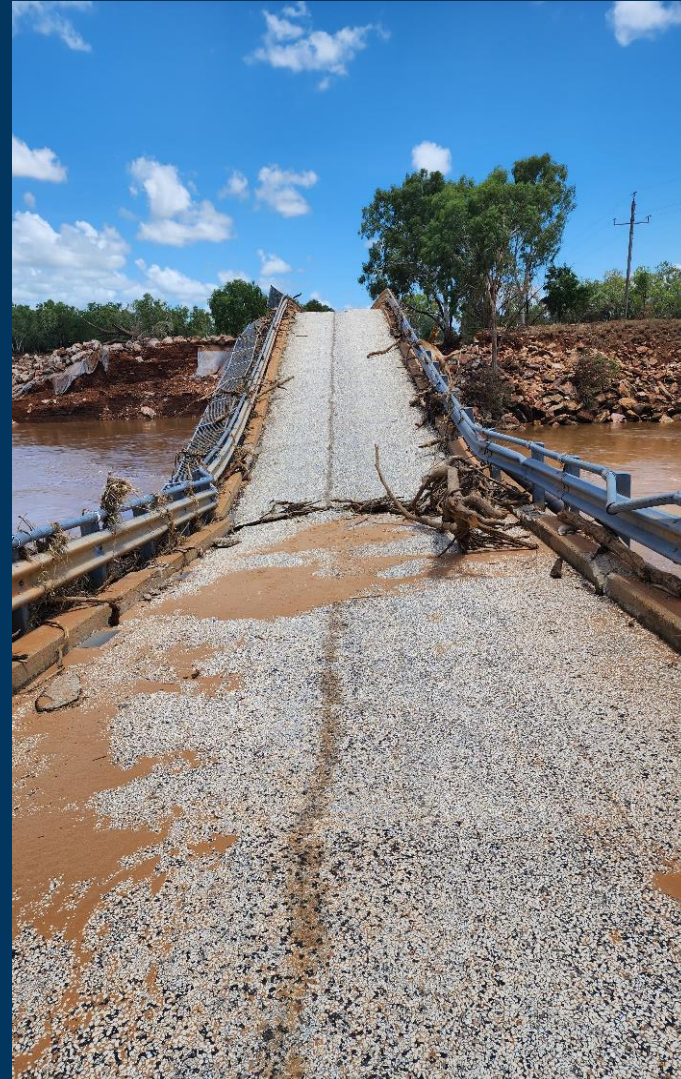


DFES
Department of Fire &
Emergency Services

FOR A SAFER STATE



- Fitzroy River Bridge destroyed
- Great Northern Highway closed for 5 months
- 11km road at Willare Crossing severely damaged
- Access roads impassable through the Kimberley



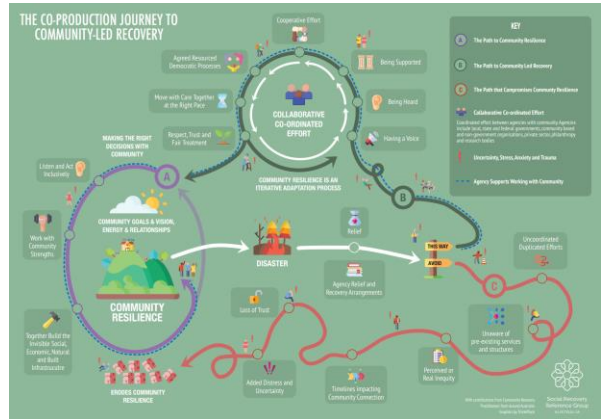
- Untreated wastewater discharged into rivers and waterways
- Pest and weeds spread by flood waters
- Significant river erosion
- Mosquito born disease
- Damage to flood-gauge infrastructure
- Countless wildlife lost
- Closure of Danguu Geikie Gorge and Windjana Gorge due to damaged infrastructure
- Unquantifiable impact to culturally significant sites

- Increased freight costs for more than 80% of businesses
- Significant impacts on up to 25 small and medium sized businesses
- More than 26 pastoral leases impacted
- Forecast loss of \$35-50 million for the tourism industry



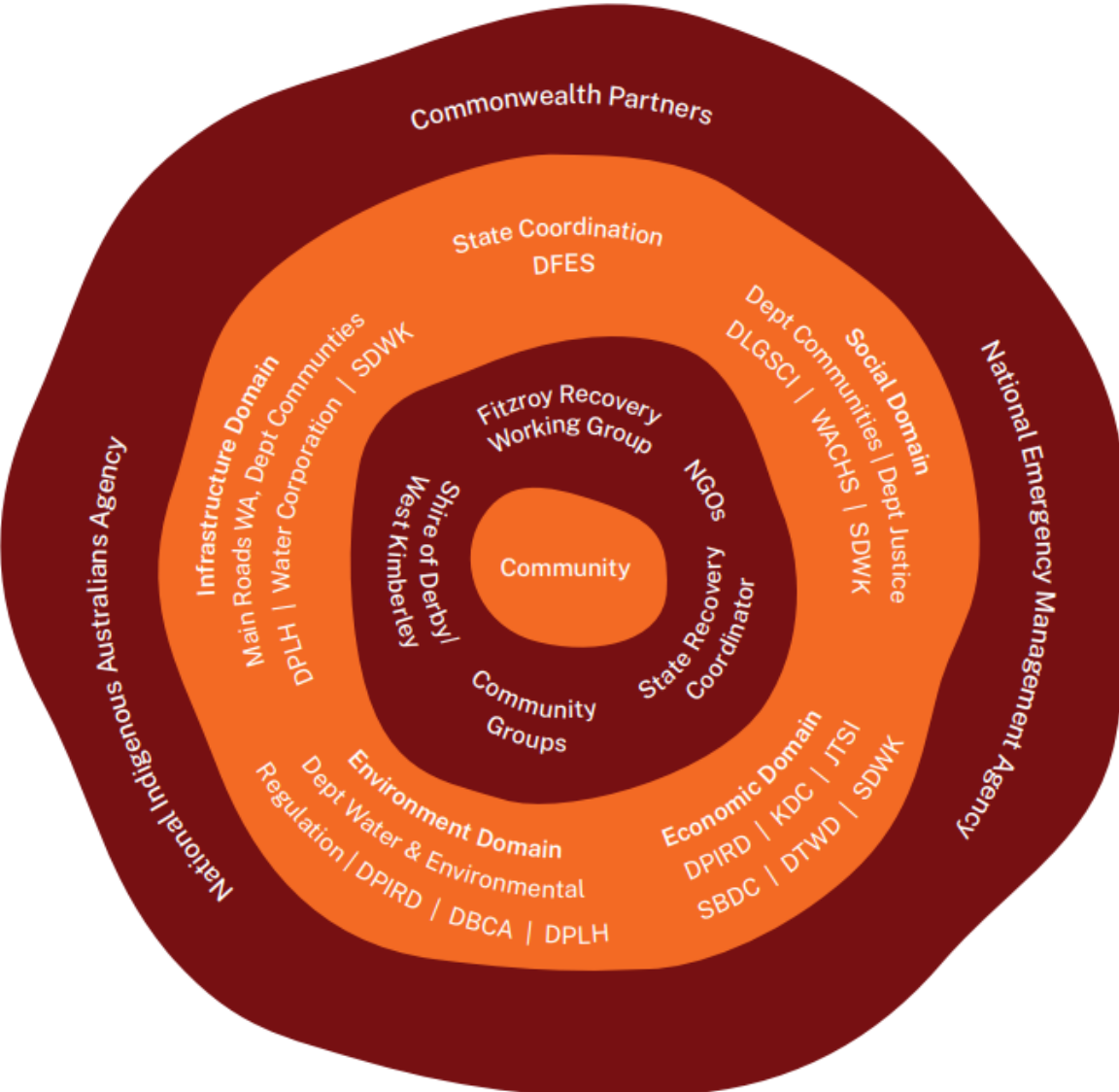
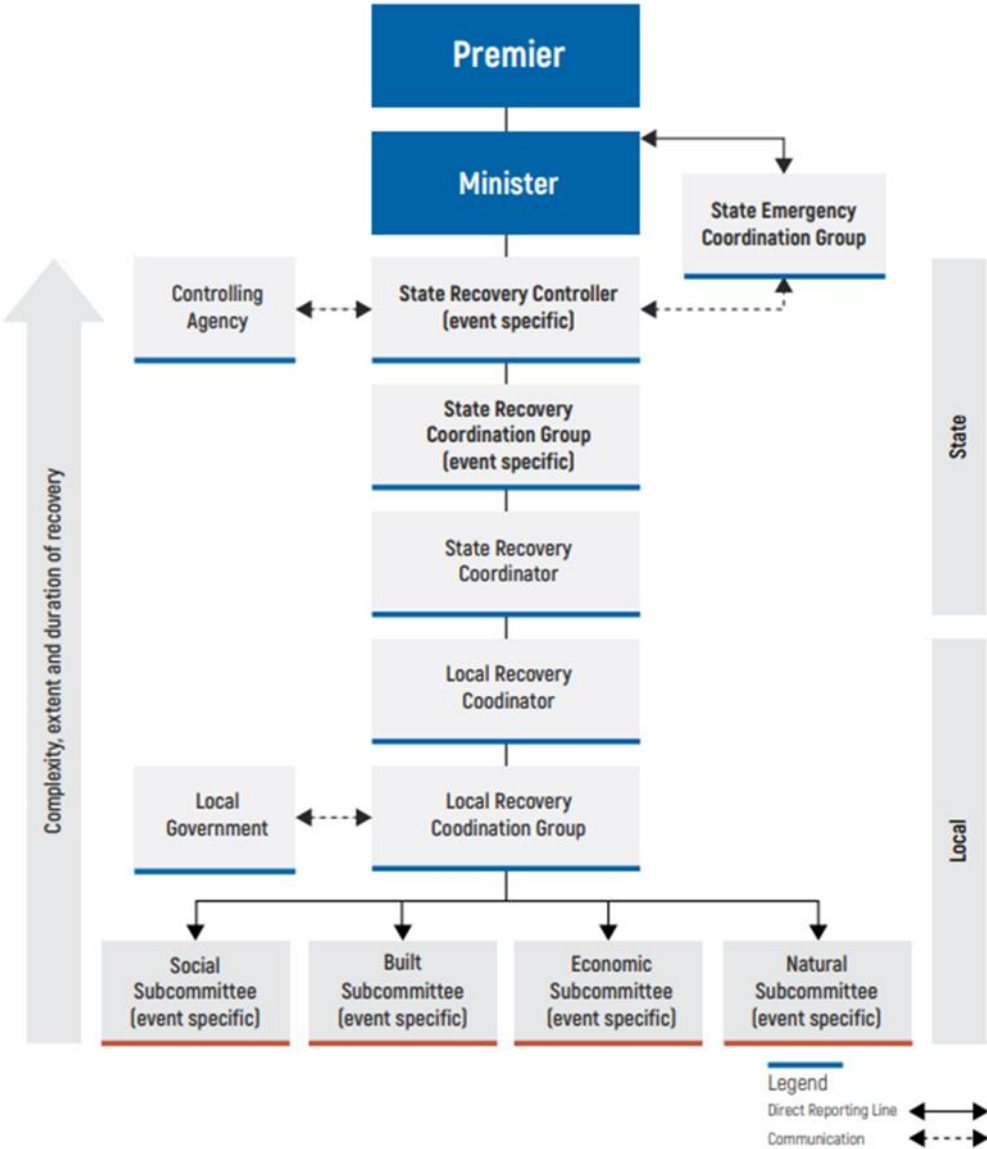
- More than 240 flooded properties
- More than 165 homes needing remediation works
- More than 680 people needing emergency accommodation
- Up to 90 people supported in longer term temporary housing



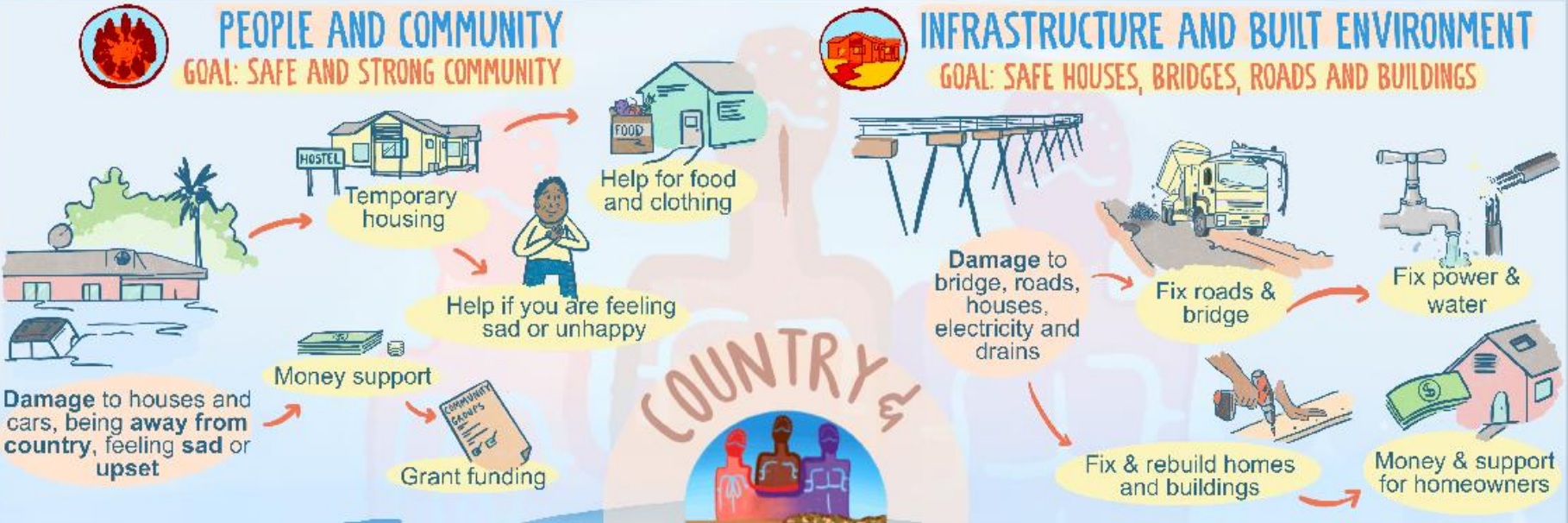


It is possible to give community a genuine voice and leadership role that connects into the decision makers – even with a state recovery model

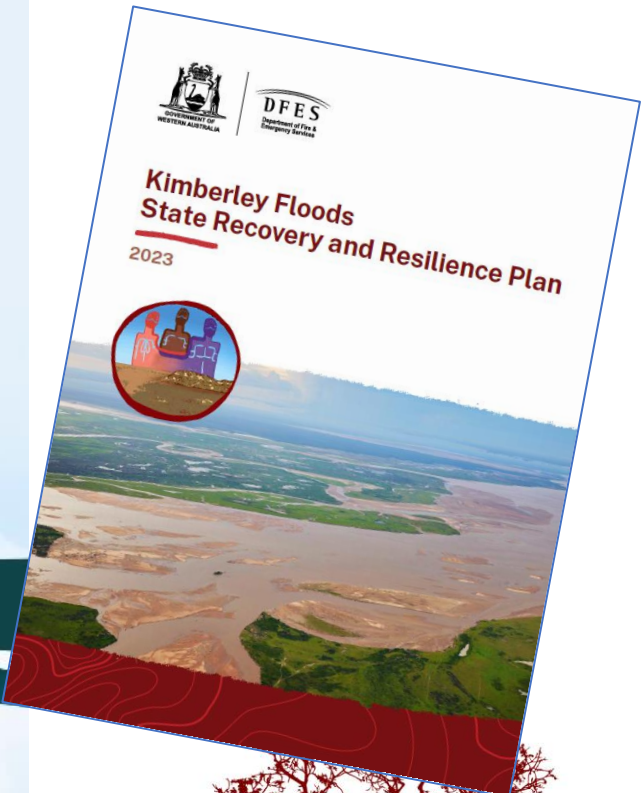
Recovery governance structure



KIMBERLEY FLOOD RECOVERY



RECOVERY is a JOURNEY LOCAL LEADERS are HELPING to FIX LOCAL COMMUNITIES





Recovery is beyond the capacity of any one entity
Partnerships are essential

Recovery Programs – Stakeholder relationships





FOR A SAFER STATE

February 2021

January 2023

November 2023



2016

2018

2020

2021

2022

2023

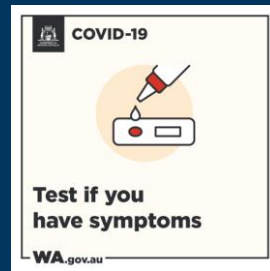
2024



Waroona Complex Bushfire Jan 2016

April 2021

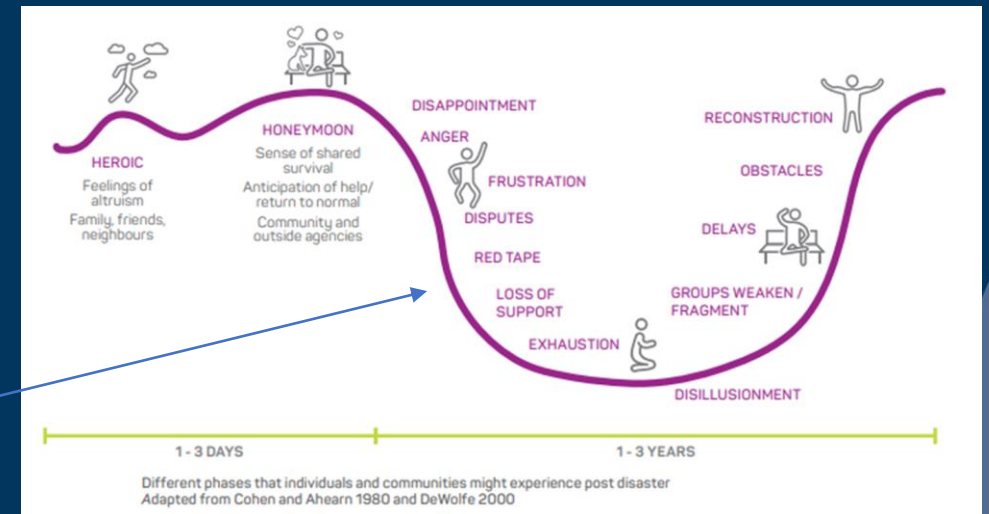
April 2023



Increasing scale and complexity
+ increasing community vulnerability and expectation
= more local governments will need more help for more events

Intersects with Land-use Planning

- **LRCG / SRCG / Sub-committees** – Government representation
- **Temporary accommodation**
 - On private land – Camping permits?
 - Land availability and approvals for temp accom camps
 - Workers accommodation
- **Rebuilding support**
 - Statutory approvals
 - BAL/SPP 3.7/SPP 3.4
 - Rebuilding Support Service
- **Trauma-informed approach**
- **Strategic planning**
 - Policy decision making; review
 - Impact on existing strategic plans e.g. East Wanneroo District Structure Plan → Mariginiup
 - Place making; urban design; community development e.g. Yarloop
 - Resilience planning (improving known vulnerabilities); preparedness (evac centres)





FOR A SAFER STATE

Thank you

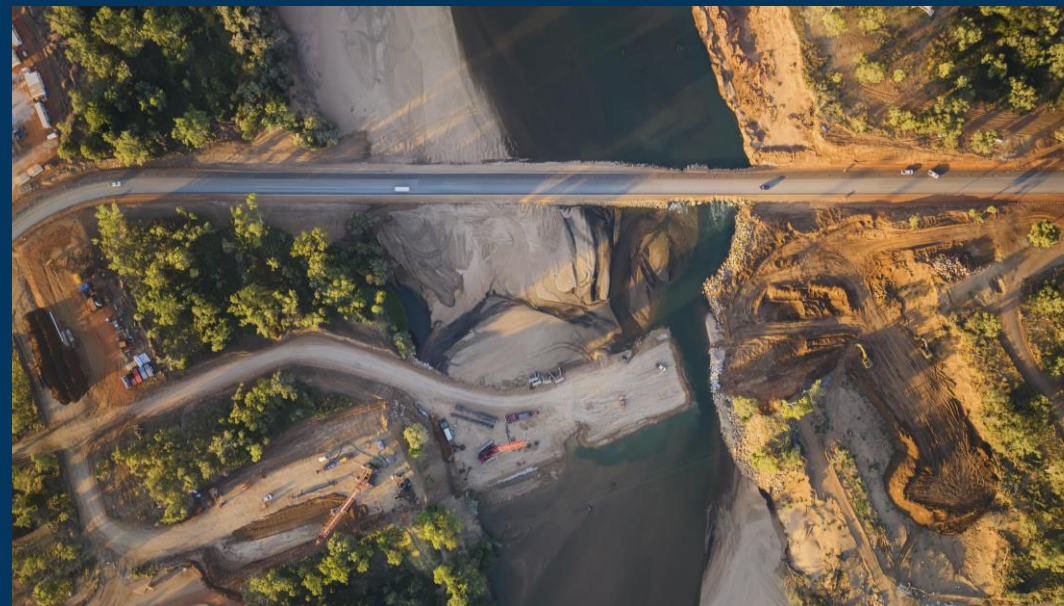
Questions?

Sam Stokes

Manager Recovery Programs, Kimberley Flood Operations
Recovery and Resilience

Samantha.stokes@dfes.wa.gov.au

0447 198 483





GUIDING PRINCIPLES for the Kimberley Flood Recovery

- Local Leadership and Empowerment & Engagement
- Community centred processes
- Avoid negative impacts (Do no harm)
- Aboriginal engagement (PBCs) prior informed consent
- Coordinated, aligned & integrated local and state government recovery work
- Culturally appropriate engagement
- Maximise benefits to longer term economic and community resilience.
- More resilient infrastructure to future natural disasters



KIMBERLEY FLOODS FINANCIAL ASSISTANCE



OPEN NOW

Homeowners Recovery and Resilience Grants*

Reimbursement grants for the costs of repairing privately owned homes

1800 490 678



Disaster Relief Assistance Category 3*

Financial support to help uninsured people without means to replace household goods

1800 032 965



Disaster Relief Assistance Category 4*

Financial support to help uninsured people without means to complete essential structural repairs

1800 032 965



Lord Mayor's Distress Relief Fund

Funding is available to help impacted individuals and communities

9191 0904



Premier's Relief Payment

CLOSING 27 SEPTEMBER 2023

\$1,000 payment to help adults replace household items

1800 490 678



Primary Producer Recovery Grant*

Grants to reimburse pastoralists for clean-up and repairs

1300 374 731



Measures to Assist Primary Producers*

CLOSING 27 SEPTEMBER 2023

Reimbursement grants for professional advice, freight subsidy and fencing

1300 374 731



Small Business Interest Rate Subsidy*

A subsidy on new loans taken out to repair damaged business assets

6392 1642



Small & Medium Business Recovery Grants*

Financial support to help with clean-up and repair of your business

13 31 40



Utility Assistance

Help with utilities for flood-affected homes and businesses

Water Corp: 13 13 85
Horizon Power: 1800 931 207



Freight Assistance Program*

Reimbursement for additional freight costs due to flood detours

1300 374 731



I am a...

- Residential tenant (home owned by private owner, government or Aboriginal corporation)
- Private homeowner
- Small or medium business
- Pastoralist
- NGO (Includes Prescribed Body Corporates)

For more information visit emergency.wa.gov.au/recovery

*Jointly funded through the Commonwealth-State Disaster Recovery Funding Arrangements

Version 2 August 2022

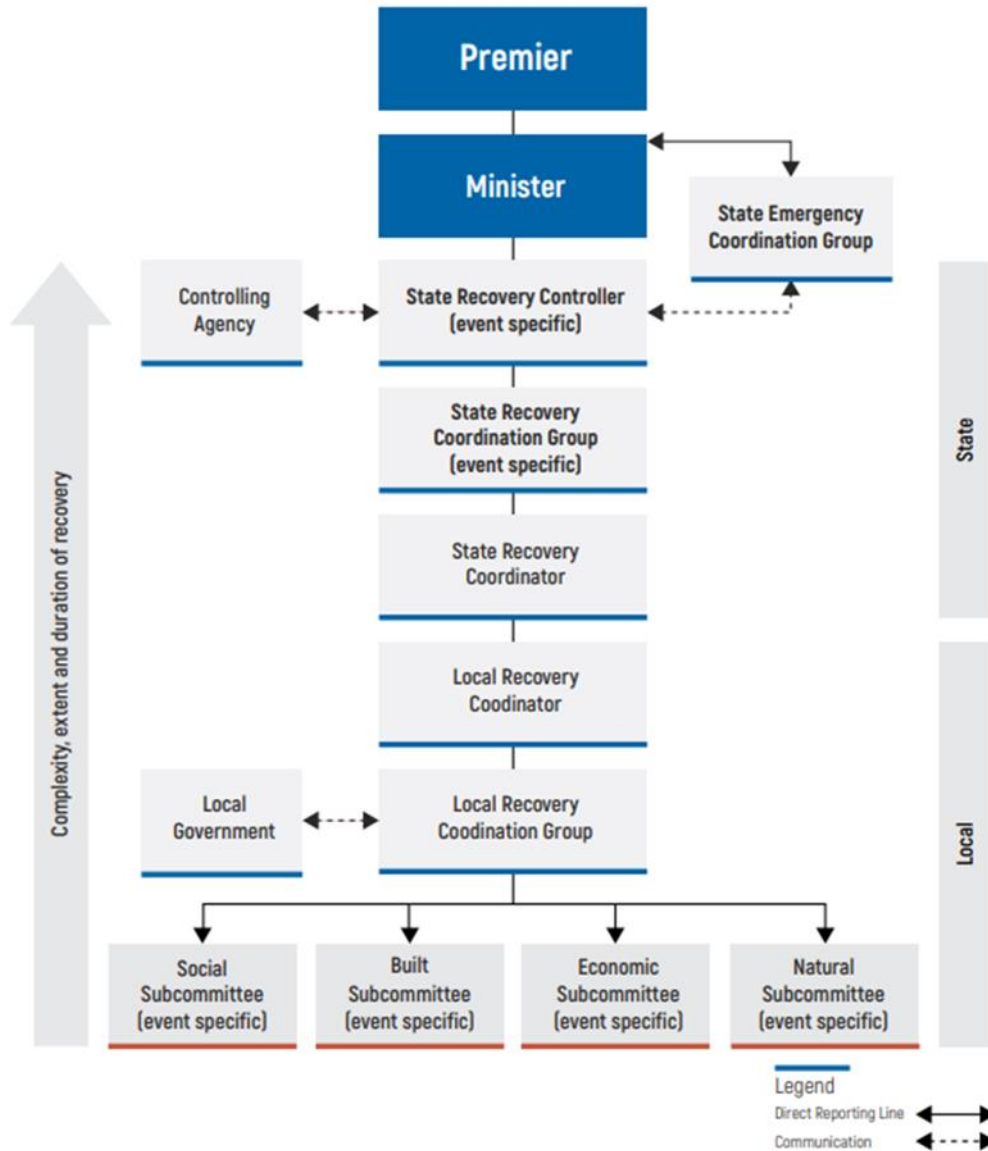
KIMBERLEY FLOOD **RECOVERY**





FOR A SAFER STATE

Recovery Governance Structure

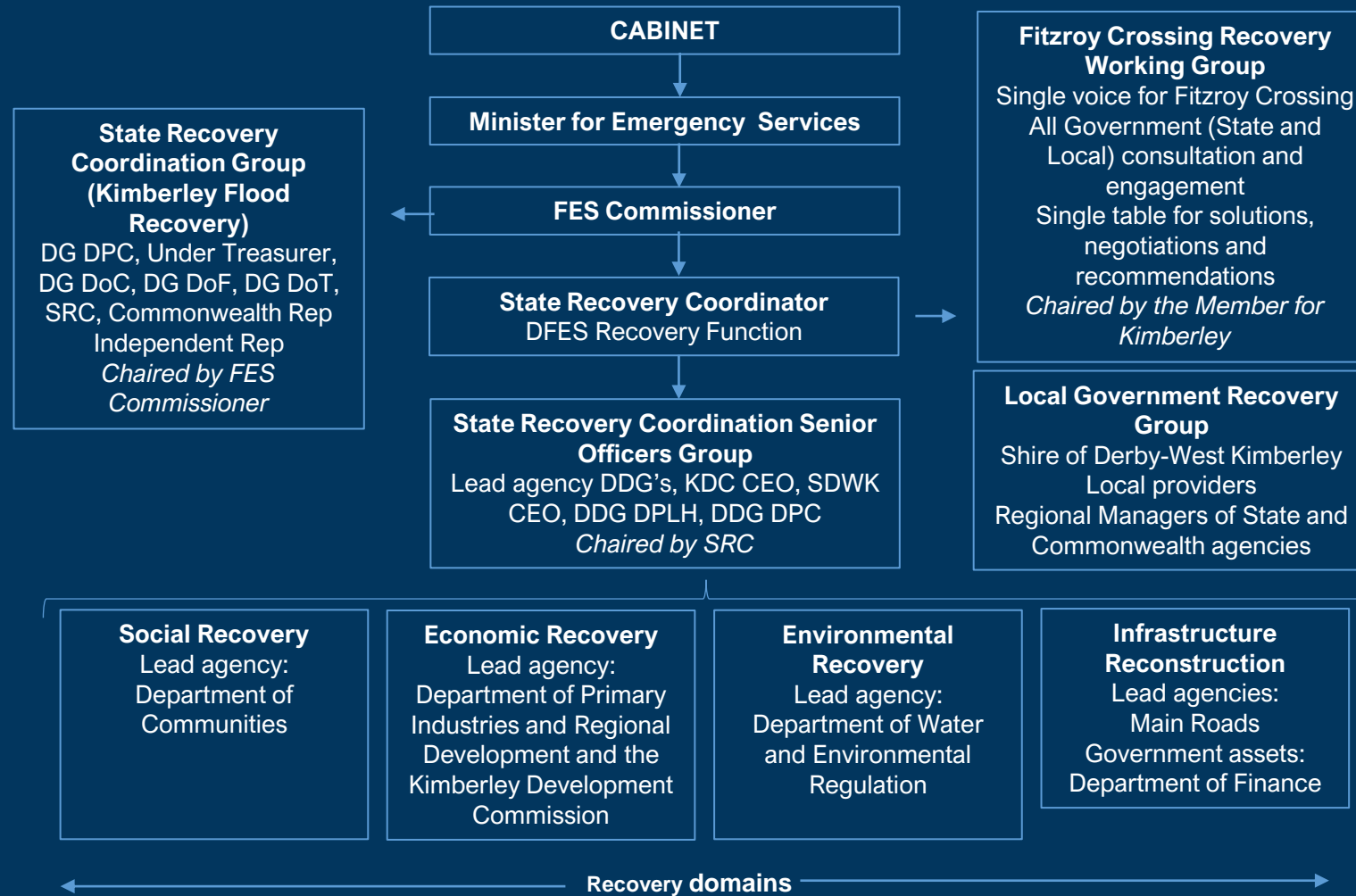


Social Environment	Built Environment
Department of Communities Department of Education Department of Health Department of Local Government, Sport and Cultural Industries Department of Primary Industries and Regional Development Mental Health Commission RSPCA WA Police Force	Department of Communities – Housing Authority Department of Transport Department of Mines, Industry Regulations and Safety – Building Commission Department of Planning, Lands and Heritage Department of Water and Environmental Regulation Energy Policy WA Main Roads WA Water Corporation
Economic Environment	Natural Environment
Department of Jobs, Tourism, Science and Innovation Department of Premier and Cabinet Department of Primary Industries and Regional Development Tourism WA Small Business Development Corporation Department of Mines, Industry Regulations and Safety	Department of Biodiversity, Conservation and Attractions Department of Health Department of Water and Environmental Regulation



FOR A SAFER STATE

Kimberley Floods Governance Structure





DFES
Department of Fire &
Emergency Services

FOR A SAFER STATE

What are we learning?

WOOROLOO BUSHFIRE RECOVERY



DFES
Department of Fire &
Emergency Services

dfes.wa.gov.au/bushfirerecovery

CYCLONE SEROJA RECOVERY



DFES
Department of Fire &
Emergency Services

emergency.wa.gov.au/recovery

KIMBERLEY FLOODS RECOVERY



DFES
Department of Fire &
Emergency Services

emergency.wa.gov.au/recovery

Increasing scale and complexity
+ increasing community vulnerability and expectation
= more local governments will need more help for more events